



# Sexual Assault RESPONDER & INVESTIGATOR INSTRUCTOR TRAINING

## TRAINING LOCATIONS

**Northern** – April 2, 3, & 4, 2024  
8:30am – 4:30pm (2<sup>nd</sup> & 3<sup>rd</sup>)  
8:30am-12:30pm (4<sup>th</sup>)

Plainfield Fire Department, 23748  
W. 135<sup>th</sup> St., Plainfield, IL 60544

[\*\*REGISTER HERE—Plainfield\*\*](#)

**Central** – May 13,14, & 15, 2024  
8:30am – 4:30pm (13<sup>th</sup> & 14<sup>th</sup>)  
8:30am – 12:30pm (15<sup>th</sup>)

ILETSB Main Office, 500 S. 9<sup>th</sup>  
Street, Springfield, IL 62701

[\*\*REGISTER HERE—ILETSB\*\*](#)

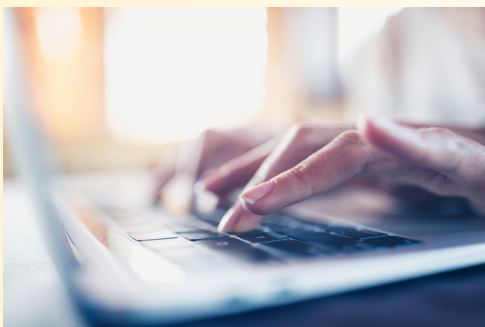
**Southern** – August 21, 22, & 23,  
2024

8:30am – 4:30pm (21<sup>st</sup> & 22<sup>nd</sup>)  
8:30am – 12:30pm (23<sup>rd</sup>)

SWIC Training Academy, Belleville,  
IL

MTU 14 Handling Registrations

**IMPORTANT NOTE: LAPTOPS  
ARE REQUIRED FOR THIS  
TRAINING.**



This free twenty-hour, three-day program, has been designed by Cordelia Coppelson to provide students the knowledge and ability to instruct both the mandated Sexual Assault Initial Responder Training (1st day only - 8 hour class), Trauma Informed Sexual Assault Investigator Training (2nd day - 8 hour class) in compliance with the Sexual Assault Incident Procedure Act (3rd day – 4 hour train the trainer portion – teach backs).

## TRAINING PREREQUISITES

- Minimum 3 years of Law Enforcement experience
- Minimum 2 years of Detective/Investigator experience
- Must have taken the Day 1 and Day 2 course previously to take this instructor class
- Attorney’s – Must have minimum 4 years of prosecutorial experience
- Teach Backs will be required to complete course



**Day 1** – Trauma Informed Response to Sexual Assault for Patrol – Instructor Training with New Updates

**Day 2** – Sexual Assault Investigator – Instructor Training with New Updates – **MUST ATTEND DAY 1 TO ATTEND DAY 2**

**Day 3**– Four hours teach backs (required)

Working lunch will be provided on days one and two.  
**Lodging responsibility of the registrant.** Questions regarding registration contact either MTU 16 (Northern Training), MTU 14 (Southern Training) or Executive Institute (Central Training).

Certification is certified by the ILETSB and meets the following mandates: Civil Rights (1.0 hour), Constitutional and Proper Use of Law Enforcement Authority (.5 hour), Crisis Intervention (1.0 hour), Cultural Competency (.5 hour), Human Rights (.5 hour), Legal Updates (1.5 hour), Procedural Justice (4.5 hours), Psychology of Domestic Violence (1.0 hour), Reporting of Child Abuse and Neglect (.5 hour), Sexual Assault Trauma Informed Response (6 hours), LHI Recert (8 hours) and Sexual Assault Investigator Training (18 hours)